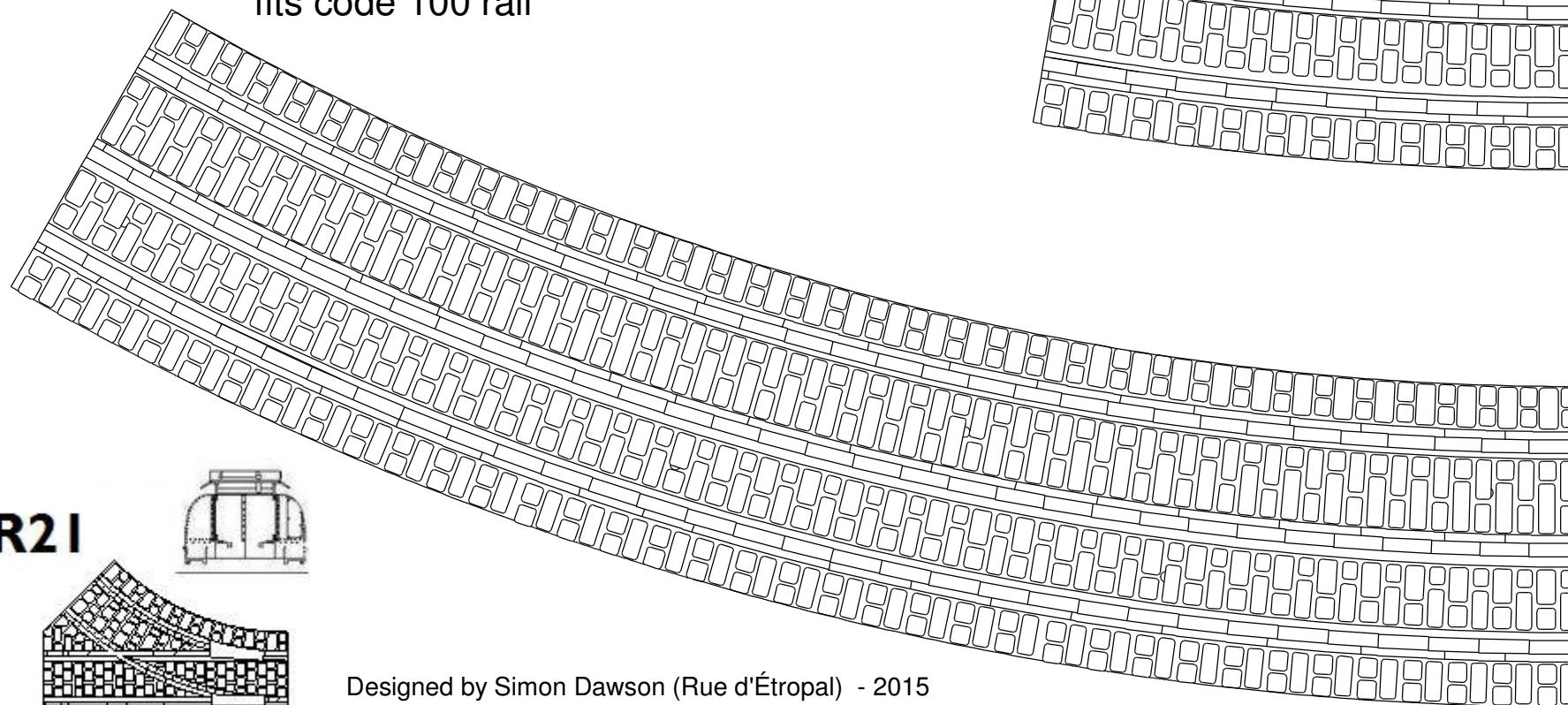
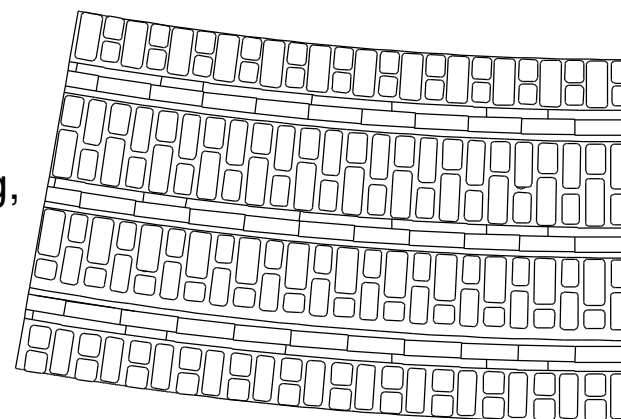
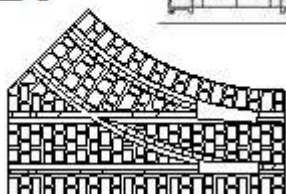
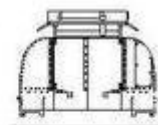


P-165-32st-tram-outer-long-curve-100-1a **P-165-32st-tram-outer-short-curve-100-1a**

curved dual gauge section,
 32mm and 16.5mm gauges,
 with 16.5mm gauge on
 outer part of curve. overall 10 deg and 30 deg,
 fits code 100 rail



R21



Designed by Simon Dawson (Rue d'Étropol) - 2015
www.rue-d-etropol.com