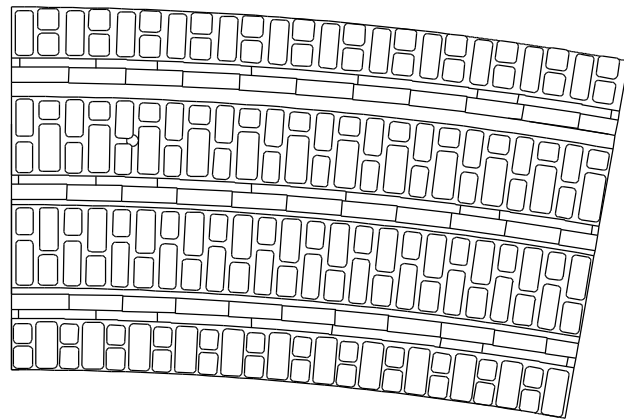
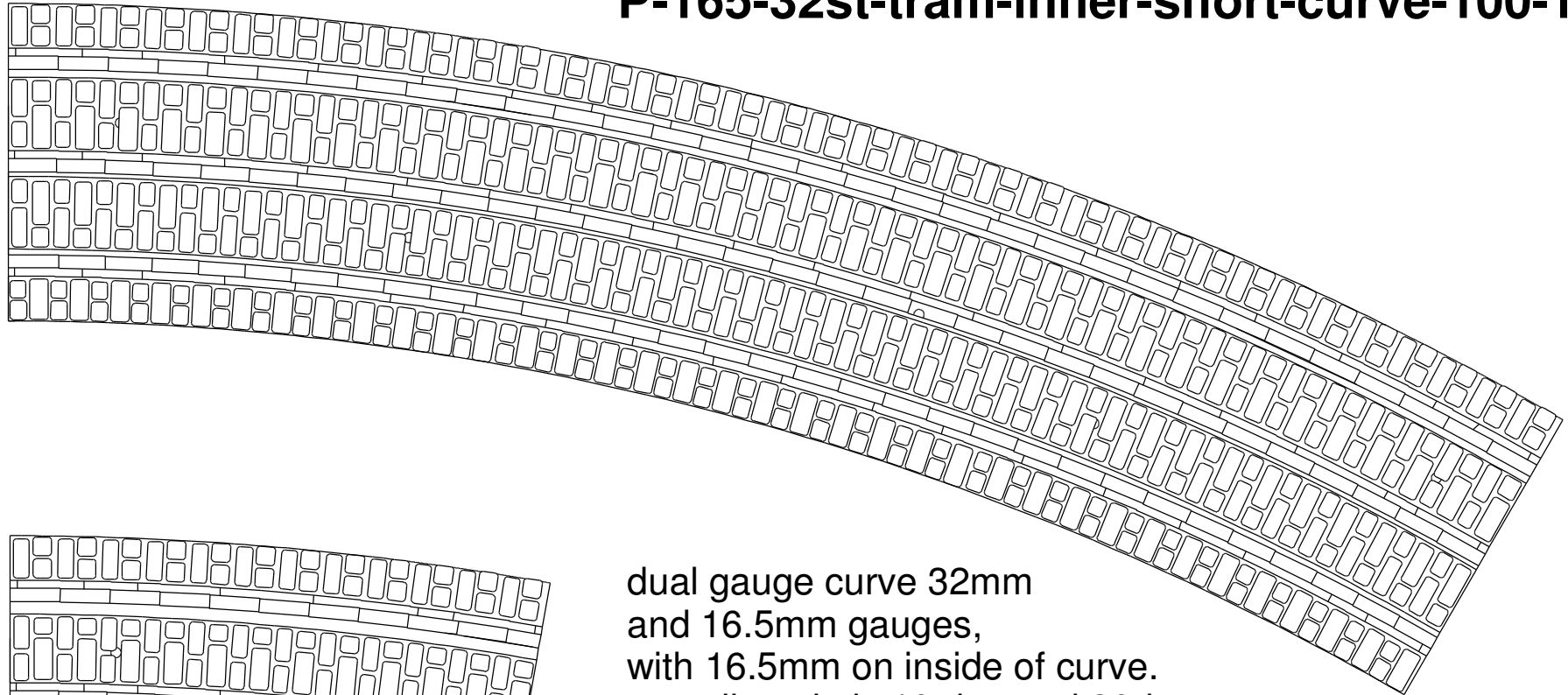
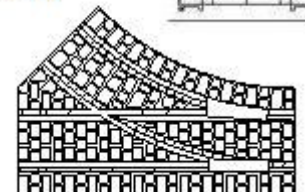
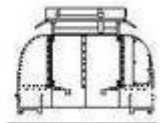


# **P-165-32st-tram-inner-long-curve-100-1a** **P-165-32st-tram-inner-short-curve-100-1a**



dual gauge curve 32mm  
 and 16.5mm gauges,  
 with 16.5mm on inside of curve.  
 overall angle is 10 deg and 30deg.  
 fit code 100 rail

**R21**



Designed by Simon Dawson (Rue d'Étropol) - 2015  
[www.rue-d-etropol.com](http://www.rue-d-etropol.com)