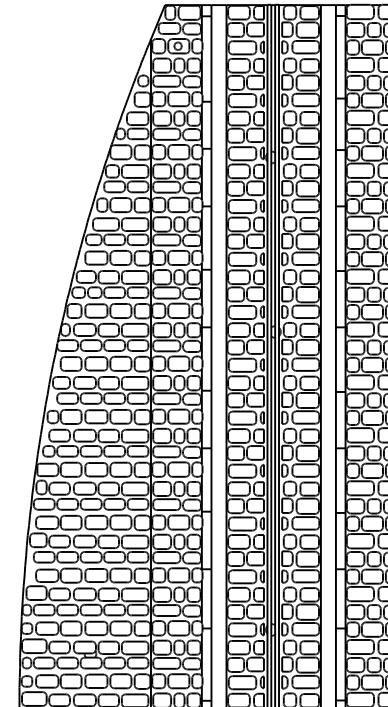
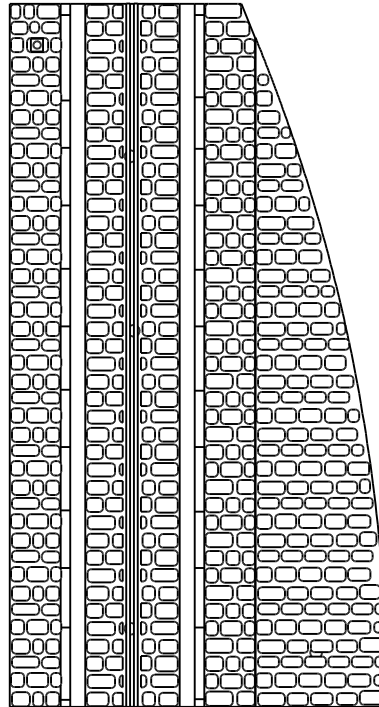


P-165stw-lh-cross-straight-250r-100-live-3a  
 P-165stw-rh-cross-straight-250r-100-live-3a  
 P-165stw-lh-cross-straight-250r-plus-100-live-3a  
 P-165stw-rh-cross-straight-250r-plus-100-live-3a

additional straight sections to fit  
 the left hand tram track crossover  
 with small stone surface



Designed by Simon Dawson (Rue d'Étropol) - 2017  
[www.rue-d-etropol.com](http://www.rue-d-etropol.com)

